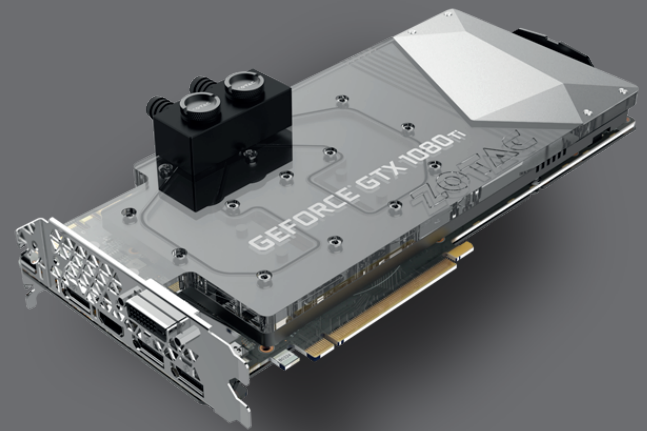


ZOTAC GeForce® GTX 1080 Ti

SKU: ZT-P10810E-30P

The ZOTAC GeForce® GTX 1080 Ti is the new flagship gaming graphics card, based on the award-winning NVIDIA Pascal™ architecture. It is packed with an incredible amount of cores and buffed with 11GB of ultra-fast GDDR5X memory, and the sheer force combines to deliver unprecedented gaming performance.



TECHNICAL SPECIFICATIONS

EAN: 4895173613104

UPC: 816264017872

FEATURES

- ArcticStorm Waterblock
- Metal Wraparound Backplate
- Direct Copper Contact with 0.3mm micro-channels
- 2 x PowerBoost
- SPECTRA LED Lighting
- 16 + 2 Power Phase
- VR Ready
- Simultaneous Multi-Projection
- NVIDIA™ Ansel®
- NVIDIA G-Sync™
- Vulkan API

SOFTWARE COMPATIBILITY

- NVIDIA GeForce® driver
- Microsoft DirectX 12 (feature level 12_1)
- OpenGL 4.5
- OpenCL
- Microsoft Windows 10/8/7 x86/x64

CONNECTIONS

- 3 x DisplayPort 1.4
- 1 x HDMI 2.0b
- 1 x DL-DVI-D
- Quad simultaneous display capable

POWER REQUIREMENTS

- 600-watt power supply recommended
- 270-watt max power consumption
- Dual 8-pin PCI Express power connectors

INSIDE THE BOX

- ZOTAC GeForce® GTX 1080 Ti ArcticStorm
- 2 x Dual Mesh Wrapped 6-pin to 8-pin power cable
- 2 x G1/4 thread 3/8" fitting
- User manual
- Driver Disk

DIMENSIONS

- Length: 300mm (11.81in)
- Height: 148mm (5.83in)
- Width: 2 slots - 43.5mm (1.71in)
- Box
- Height: 424mm (16.69in)
- Width: 292mm (11.5in)
- Depth: 99mm (3.9in)

SPECIFICATIONS

- NVIDIA GeForce® GTX 1080 Ti GPU
- 3584 CUDA cores
- 11GB GDDR5X memory
- 352-bit memory bus
- Engine clock (base): 1506 MHz
(boost): 1620 MHz
- Memory clock: 11.0 GHz
- PCI Express 3.0



For more information please visit:
ZOTAC.COM