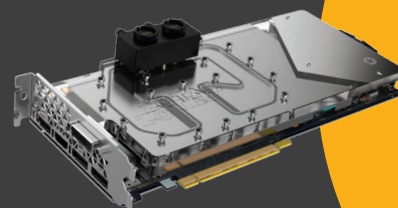


→ GRAPHICS CARD / CARTE GRAPHIQUE / GRAFIKKARTE / TARJETA GRAFICA / ВИДЕОКАРТА

GEFORCE® GTX 1080 ARCTICSTORM

Be fearless. Turn your gaming power up to eleven with the ZOTAC GeForce® GTX 1080 ArcticStorm. Raise the playing field with the most advanced gaming graphics card ever without fear of hitting the thermal capacity.

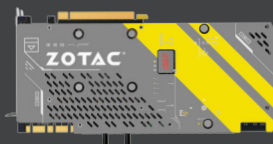
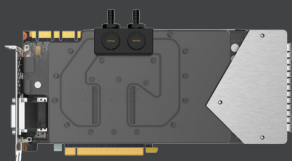
The waterblock provides full board coverage and fitted with innovative technologies such as Direct Copper Contact with Micro-channels to maximize thermal performance. Discover performance, power efficiency, and gaming experiences with powerful performance and cool thermals.



SKU: ZT-P10800F-30P

EAN: 4895173610202

UPC: 816264016967



TECHNICAL SPECIFICATIONS

FEATURES

- ArcticStorm Liquid Cooling Waterblock
- SPECTRA Lighting System
- Metal Wraparound Backplate
- Direct Copper Contact with Micro-channels
- POWERBOOST
- Simultaneous Multi-Projection
- VR Ready
- NVIDIA Ansel
- NVIDIA® SLI® w/ HB Bridge Support
- NVIDIA G-Sync™
- NVIDIA® GameStream™

SPECIFICATIONS

- NVIDIA GeForce® GTX 1080 GPU
- 2560 CUDA cores
- 8GB GDDR5X memory
- 256-bit memory bus
- Engine clock (base): 1632 MHz
(boost): 1771 MHz
- Memory clock: 10 GHz
- PCI Express 3.0
- Fitting: G1/4 Thread, 10mm ID Tube

CONNECTIONS

- 3 x DisplayPort 1.4
- 1 x HDMI 2.0b
- 1 x Dual-link DVI
- Quad simultaneous display capable

POWER REQUIREMENTS

- 500-watt power supply recommended
- 180-watt min power consumption
- 2 x 8-pin PCI Express power connectors

SOFTWARE COMPATIBILITY

- NVIDIA GeForce® driver
- Microsoft DirectX 12 (feature level 12_1)
- OpenGL 4.5
- OpenCL
- Microsoft Windows 10/8/7 x86/x64

DIMENSIONS

- Length: 300mm (11.8 in)
- Height: 148mm (5.83 in)
- Width: 2 slots
- Box
 - Height: 424mm (16.69in)
 - Width: 292mm (11.5in)
 - Depth: 99mm (3.9in)

INSIDE THE BOX

- ZOTAC GeForce® GTX 1080 ArcticStorm
- 2 x Dual 6-pin to 4x2-pin power cable
- 2 x G1/4 Thread 3/8" Fitting
- User Manual
- Driver disc

HDMI™
HIGH-DEFINITION MULTIMEDIA INTERFACE

