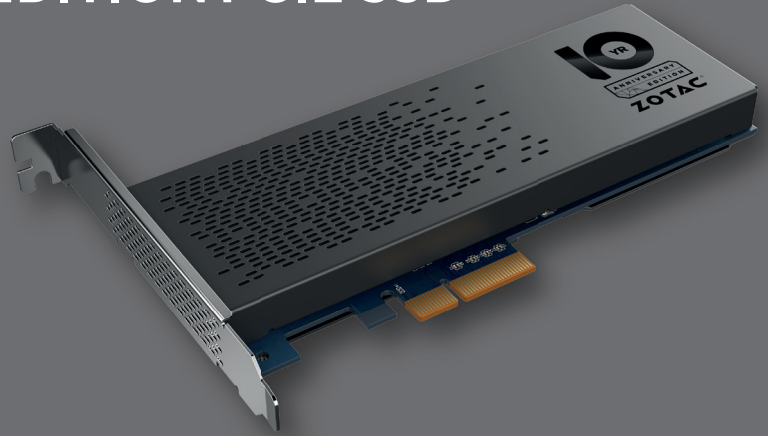


## SONIX 480GB 10 YEAR SPECIAL EDITION PCIE SSD

**SKU: ZTSSD-PG3-480G-LED**

**SONIX** shifts into high gear with the 10 YEAR ANNIVERSARY SPECIAL EDITION SONIX SSD. The Special Edition shines in ultra-fast speeds and an all new LED lit backplate. With the PCIe x4 NVMe interface, the setup is a simple plug and play\*, so say goodbye to cable management. Your ultimate upgrade requires no wires and no mess - just a sleek dose of metal, silicon, and blazing speed.



### GAMING

Say goodbye to the load screen



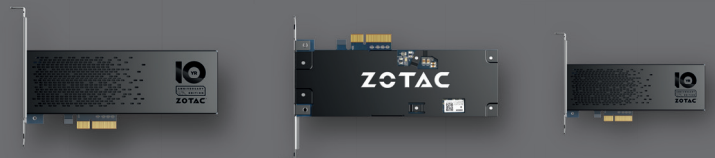
### CREATIVE CONTENT

Access large graphics or video files in a snap



### PRODUCTIVITY

Navigate large databases with ease



\*ADDITIONAL DRIVERS MAY BE REQUIRED.

## TECHNICAL SPECIFICATIONS

**EAN:** 4895173611117

**UPC:** 816264017216

### SPECIFICATIONS

- PCIe Add-in-Card
- 480 GB
- NVME 1.2 PCIe Gen 3 x 4
- Toshiba MLC NAND Flash-type Memory
- 512MB DDR3 High-speed Cache Memory
- 3,000 Program/Erase (P/E) Cycle
- 698 TB TBW

### POWER CONSUMPTION

- Read: 5.57W
- Write: 7.27W
- Idle: 0.5W
- Average: 4.45W

### SSD DIMENSIONS

- Length: 182mm (7.17in)
- Width : 69mm (2.72in)
- Height: 23mm (0.91in)

### BOX DIMENSIONS

- Length: 258mm (10.16in)
- Width : 58mm (2.28in)
- Height: 167mm (6.57in)

### TEMPERATURES

- Operating: 0-70 °C
- Non-Operating: -40-85 °C

### SOFTWARE COMPATIBILITY

- Microsoft Windows 8.1 / 10 (32 / 64-bit)

### FEATURES

- End to End Data Protection
- Static and Dynamic Wear Leveling
- Over-Provision
- Bad Block Management
- SmartECC
- TRIM
- MTBF 2,000,000 hrs
- S.M.A.R.T
- SmartFlush
- GuaranteedFlush
- LED backplate lighting

### SPEED

- Read: Up to 2,800MB/s (seq)
- Write: Up to 1,500MB/s (seq)

### INSIDE THE BOX

- Low-profile adapter
- User manual
- Warranty card
- ZOTAC 10 Year Anniversary badge

### WARRANTY

- 3-year Warranty



**COMPUTEX**  
d&i awards 2016  
by iF

For more information please visit:  
**ZOTAC.COM**